

2026

Company profile

Innovative lighting solutions: Efficient. Sustainable. Tailor-made.

Our areas of expertise

For over 20 years, **BRAUN Lighting Solutions** has been synonymous with innovative and energy-efficient lighting – from LED retrofit kits to complete lighting systems. Whether you're looking for modern designs or historic charm, we offer tailor-made solutions for indoor and outdoor areas. Our service? More than just light! In addition to maintenance and financing, we can also integrate smart control, radio, and sensor technology on request.

Our areas of expertise:

- Historic & modern street lighting
- Industrial & hall lighting
- Solar lighting & carports
- Airport lighting
- Plant lighting
- E-mobility

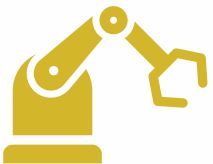


LED Lights „made in Germany“



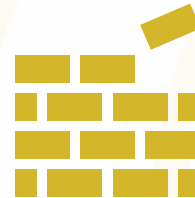
Low maintenance

Installer- and maintenance-friendly solutions with up to 85% energy savings compared to previous light sources (HQL / HQL / NAV / HIT, etc.) and a service life of 50,000 to 100,000 hours.



Advanced facilities

Our own production line for high-quality LED lighting solutions equipped with advanced production facilities and inspection instruments.



Modular design

The modular design concept is one of the advantages of our products. It enables faster, easier, and more efficient system updates and requires less recycling.



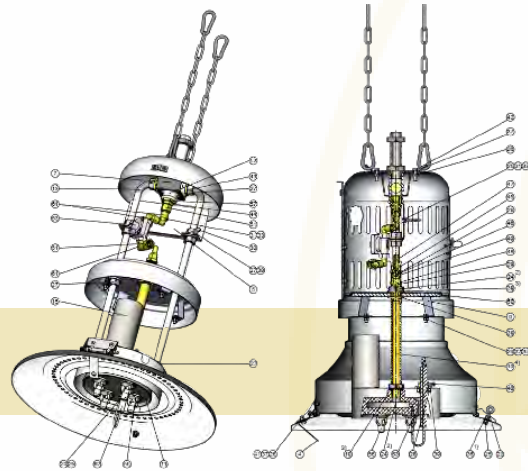
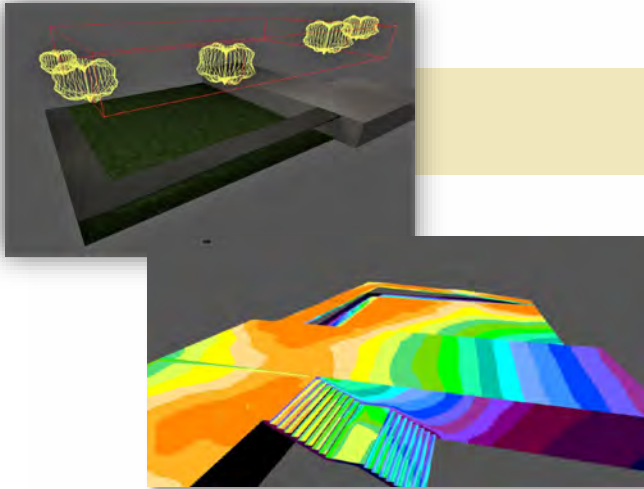
Future-Proof Design

Products built with the future-proof concept in mind offer a variety of options for easy expansion and upgrading to smart lighting & IoT.

The manufacturing process

Research & Development

Innovations are developed in-house: we test new materials, further develop lighting technology, and continuously optimize our products in terms of efficiency, sustainability, and design.

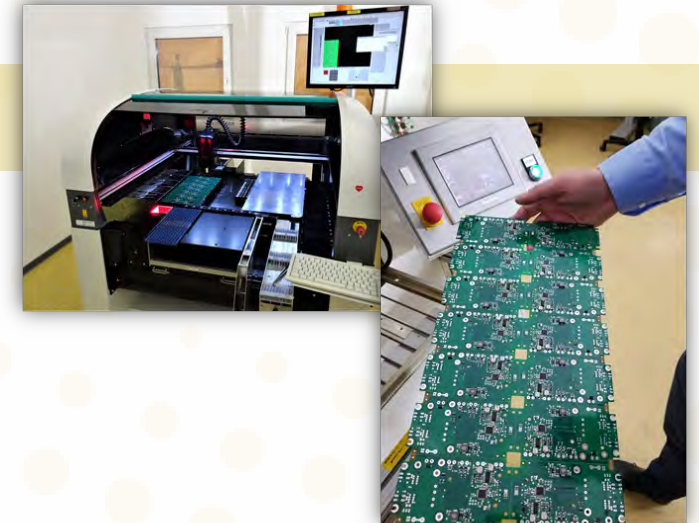


CAD

Our CAD department develops precise 3D models and technical drawings as the basis for each individual solution. The focus is on functionality, design, and feasibility.

Electronics

This is where the heart of our luminaires is created: intelligent control technology, powerful LED modules, and efficient electronic components – precisely tailored to customer requirements.



The manufacturing process

Manufacturing

Our manufacturing combines precision craftsmanship with state-of-the-art technology. Our metalworking shop produces custom-made luminaire housings, poles, and special components—all “Made in Germany.”



Paint shop

In our in-house paint shop, we ensure durable, weather-resistant surfaces. We implement individual color requests, powder coating, or special protective coatings to the highest standards.

Installation & maintenance

Our experienced installation team takes care of professional installation on site. Even after the project is complete, we offer service, maintenance, and system upgrades from a single source – for permanently reliable lighting.



PROJECT Berlin

Residential area in Rudow, Berlin

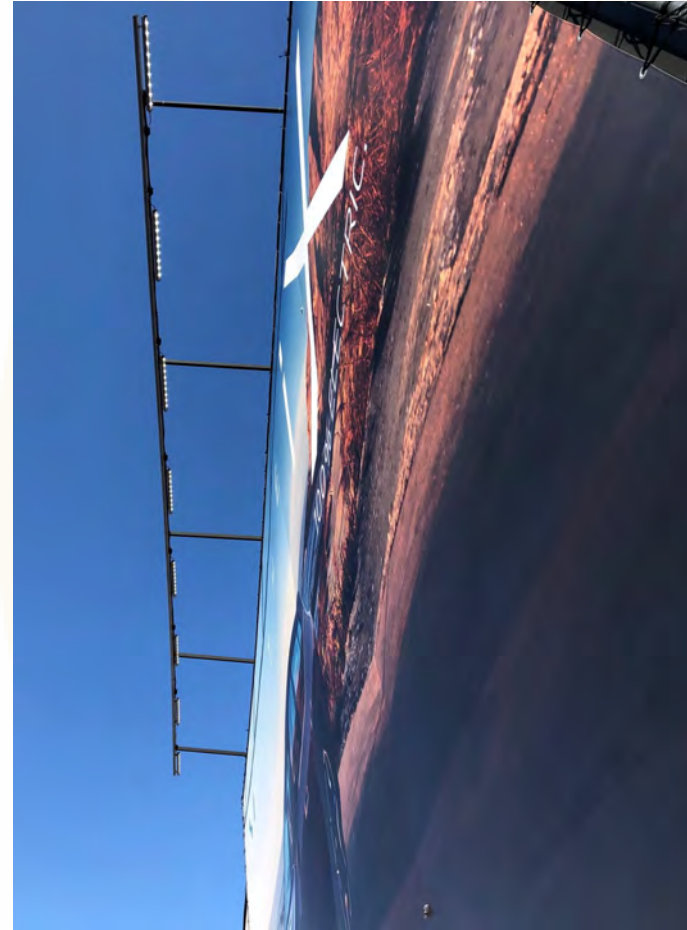
This luminaire impressed with its excellent price-performance ratio. The use of special secondary optics enabled the symmetrical and asymmetrical light distributions required by the client to be implemented optimally. With the new system, energy consumption fell from 80W to 30W per luminaire. The energy saving amounts to around 70%.



PROJECT Berlin

Advertising walls at BER Airport, Berlin

The company has developed a new linear LED lighting system consisting of a high-strength aluminum support structure with newly developed linear luminaires. The lighting system is low-maintenance, very durable, dark sky-friendly, and compatible with existing power supply systems.



PROJECT Dresden

Semperoper Dresden, Saxony

Extensive reconstruction work on a dozen candelabras. To this end, the candelabras, weighing several tons, were dismantled and transported to the company's headquarters in Berlin for complete refurbishment. The tried-and-tested His.lux® Premium modules were then installed.

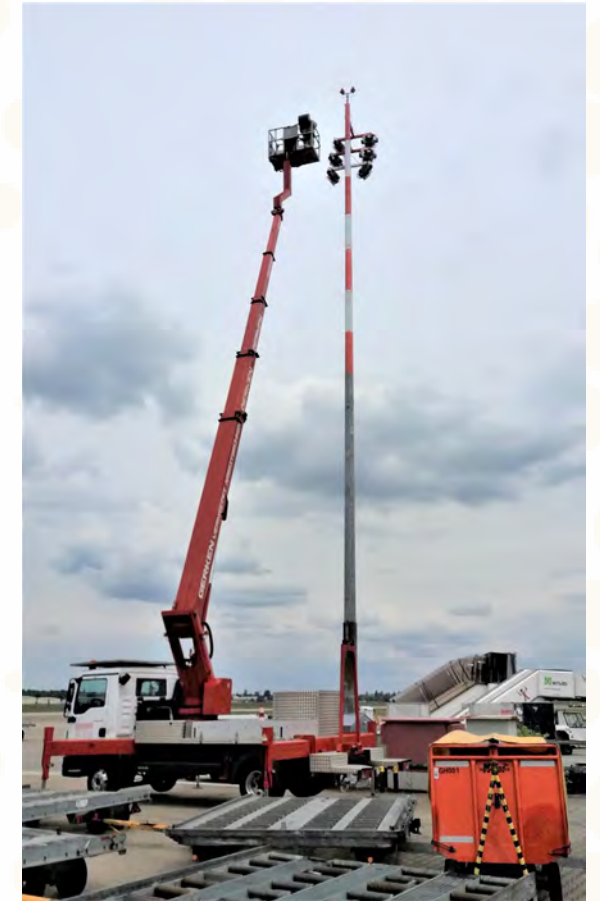


PROJECT Bodensee

Lake Constance Airport, Baden-Württemberg

Friedrichshafen Airport is one of the largest airports in Baden-Württemberg. At the beginning of 2018, BRAUN was commissioned to convert the existing mast floodlights on the apron to LED technology. All masts on the airport apron were converted in record time to the client's complete satisfaction.

Thanks to BRAUN's innovative lighting technology and the high CO2 savings, the airport company received a **certificate** from the National Climate Protection Initiative for the project "Conversion of apron lighting to LED" at the beginning of 2019.



PRODUCTS Modules

Flexible, efficient, future-proof

Our **LED modules** enable the quick and economical conversion of a wide variety of luminaire types – from modern systems to decorative and historic luminaires. Light color, output, and optics can be individually configured and offer maximum efficiency with maximum light quality.

Our **His.lux® modules** in particular impress with their durable technology, variable light distribution, and ideal suitability for preserving historical lighting culture.

His.lux-Module
NewNight-Module
BigTAB-Module



His.lux® 1



His.lux® 2



His.lux® 3



His.lux® 4



His.lux® Premium 4



His.lux® 4 L7 Pro



His.lux® 6 L7 Pro



PRODUCTS Spotlights

Precise, powerful, versatile

Our **LED spotlights** effectively highlight buildings, paths, and objects. With high light output, efficient technology, and various beam characteristics, they provide optimal illumination for facades, squares, or driveways.

The robust housings, flexible mounting options, and optional additional functions make them the ideal solution for durable, professional outdoor lighting.

Functional spotlights

Single spot

Ground-recessed spotlights

Compact spotlights

Skylights



3LENS PIN



Light Beam



Single Spot



Light Beam 9



Ground-recessed spotlights



Compact spotlights

PRODUCTS Historical Lighting

Preserving tradition, illuminating the future

Our **historic luminaires** combine faithful reproduction of original designs with state-of-the-art LED technology. Whether for reconstruction, renovation, or retrofitting, BRAUN preserves the cultural character of historic cityscapes while providing energy-efficient, durable, and standard-compliant lighting.

With high-quality materials, loving details, and modular lighting solutions, we create authentic city lighting for generations.

Rodan
Old Berlin
Old Warsaw
Old Leipzig
Pendant lights



Old Berlin



Old Warsaw



Rodan



Pendant light 4

PRODUCTS Modern Lighting

Efficient design for urban spaces

Our **modern LED luminaires** combine clear design with powerful lighting technology. They provide safe, uniform, and energy-efficient illumination for streets, paths, parks, and facades.

With a wide range of designs, interchangeable optics, and smart control options, BRAUN offers tailor-made solutions for every urban application – durable, low-maintenance, and future-proof.

LUNA
Pin-Boards
FlexPIN
BeeLED
Bollards



LUNA



Pin-Board 2D



FlexPIN



BeeLED



Bollard BLADE1000

PRODUCTS E-Mobility

Intelligent charging infrastructure with ChargeX

Together with ChargeX, BRAUN offers future-proof solutions for the expansion of modern **charging infrastructure**. Our focus: efficient load distribution, scalable charging systems, and perfect integration into existing lighting and infrastructure projects.

Whether in residential areas, business locations, or municipal areas, we combine high-quality hardware with intelligent charging management to create an economical, flexible, and user-friendly e-mobility solution.

Charging stations

Storage

Inverters



PRODUCTS Solar

Energy-independent lighting & smart carport solutions

With our **solar lights** and **solar carport systems**, we offer sustainable, independent, and highly efficient solutions for modern infrastructures. The combination of powerful photovoltaics, smart energy management, and durable LED technology enables reliable lighting and clean energy—without any connection to the grid.

Whether for parking lots, residential areas, or municipal areas, our solar products reduce operating costs, create planning security, and make a direct contribution to climate protection.

LUNA Solar Carports



LUNA Solar



Solar carports for at least 1 car



Nunsdorfer Ring 2-10
12277 Berlin, Germany
www.braun.lighting
info@braun-lighting.com
Tel. +49 (0)30 7007 763-100

Contact

Christian Zeher

Sales Department
c.zeher@braun-lighting.com
T + 49 (0)30 700 77 63-123
M + 49 (0)151 74 44 44 58

Sarah Salzwedel

Sales Department
s.salzwedel@braun-lighting.com
T + 49 (0)151 1846 3088
F + 49 (0)30 700 77 63-101

Follow us on social media:

