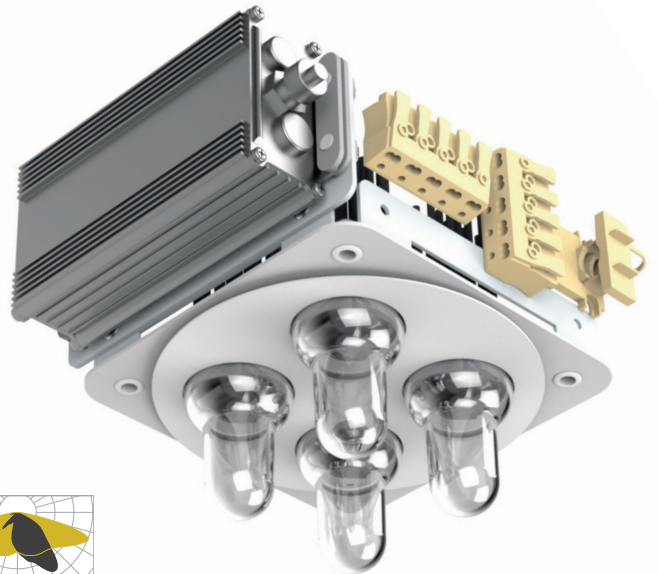


His.lux[®] LED universal module 4

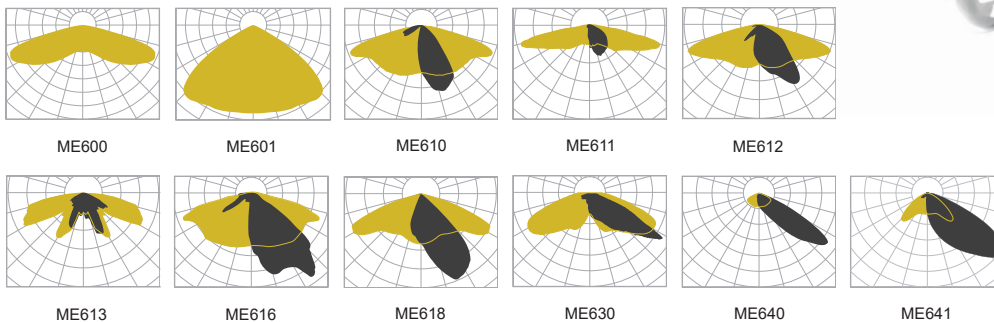
BRAUN[®] LED module L7-Pro (IoT-Ready)

Technical Description

His.lux universal module 4, which is based on the special aesthetics of gas lighting. Suitable for use in decorative luminaires of all kinds. Choose between symmetrical and a variety of asymmetrical light distributions to customise your lighting project.



Light distribution



BRAUN [®] His.lux L7-Pro	
Module series	L7-Pro
Power	33,6 watts 25,4 watts 16,8 watts
LED luminous flux*	4971 lm 3763 lm 2484 lm
Light colour	warmwhite
Colour temperatures	1800 K 2000 K 2200 K 2700 K 3000 K
Colour rendering index (CRI)	70 (optional: 80 oder 90)
Degree of protection LED room	IP66
light distribution	symmetrical or asymmetrical
Power control	DALI-2 D4i
Permissible operating voltage	230V AC / 50Hz
Permissible operating temperature	-40°C to 55°C
LED control gear	IP66/67 ENEC CE
Oversvoltage protection	up to 6 kV
Protection class	I or II

*Rated luminous flux at 3000 K

BRAUN Lighting Solutions e. K. is part of the export initiative 'Energy Efficiency - made in Germany' - initiated by the Federal Ministry of Economics and Technology. Due to the complex combination possibilities of different power supply units and LED modules, the typical values given for the technical LED parameters and the performance parameters are purely statistical values that do not necessarily correspond to the actual technical parameters of each individual product, which may deviate from the typical value. The information and illustrations contained in this document are not part of an offer or contract. Product parameters may change due to technical innovations and are subject to change without prior notice. Manufactured in accordance with DIN EN, VDE regulations, CE.

BRAUN Lighting Solutions e.K.
Nunsdorfer Ring 2-10
12277 Berlin
Germany

www.braun.lighting
info@braun-lighting.com
+49 (0)30 7 007 763 100
+49 (0)30 7 007 763 101

