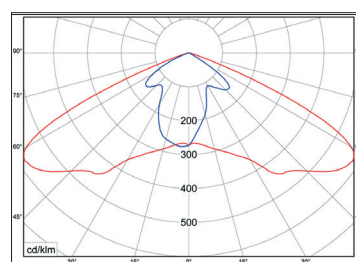
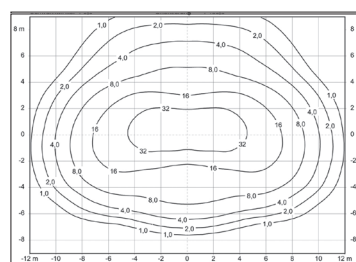
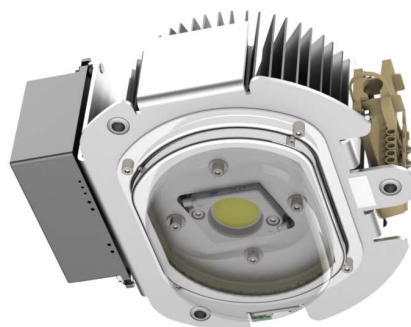


cityLED Universalmodul

BRAUN LIGHTING SOLUTIONS

- Optimized for mounting in street lights
- Scratch-resistant and 100% UV-resistant glass lens
- Long service life of all system components
- Ready to use "Plug and Play" module
- IP 66
- The LED power is adjustable
- High lm/Watt efficiency
- Half-night switching, programmed dimming
- LED illuminant exchangeable
- Light point height from 4m to 10m



The cityLED universal module from BRAUN® was designed for retrofitting existing and new lighting systems. There are five technically high-quality modules available for the replacement of mercury and metal halide lamps. These modules increase the efficiency and usability of existing luminaires. At the same time, significantly reducing the energy costs and the economic efficiency of the lighting system. The system can be optimized with this "plug and play" solution.

| cityLED Universalmodul | ON/OFF | E1 | E2 | E2-R | R |
|---|--------|-------|-------|-------|-------|
| Module power in Watt typical | 40 | 10-40 | 10-40 | 25-70 | 25-70 |
| Possibility(s) of regulating the performance | | | | | |
| manually via 10-step coding switch | | • | • | • | |
| programmable via service unit | | | | • | • |
| Dimming function | | | | | |
| Half-night switching via control voltage 230V Dimming is manual via 10-step coding switch | | | • | • | |
| several dimming levels programmable, astronomical dimming | | | | • | • |
| 0-10 V / 1-10 V Interface | • | | | • | • |
| Dali/PWM interface | | | | • | • |
| Special functions | | | | | |
| Constant light function (counteracts the loss of light) | | | | • | • |
| Light color typical *other color temperatures on request | | | | | |
| 2700K warmwhite | • | • | • | • | • |
| 3000K warmwhite | • | • | • | • | • |
| 4000K neutralwhite | • | • | • | • | • |
| 5000K coldwhite | • | • | • | • | • |
| Application | | | | | |
| For service and residential roads | • | • | • | • | • |
| For cycle paths, footpaths and green areas | • | • | • | • | • |

Braun Lighting Solutions e. K. is a participant in the export initiative "Energie Effizienz – made in Germany", initiated by the Federal Ministry for the Economy and Technology. Due to the complexity of the many possible combinations of drivers and LED modules, the values shown for technical LED parameters, including performance parameters, are typical. Actual values of specific products in specific configurations may vary from these typical values. The information and diagrams contained in this document do not constitute an offer or contractual obligation. Product parameters may change as a result of technical innovation and will be undertaken without prior notice. Our manufacturing conforms to DIN EN and VDE regulations; the product conforms to European EMC regulations.