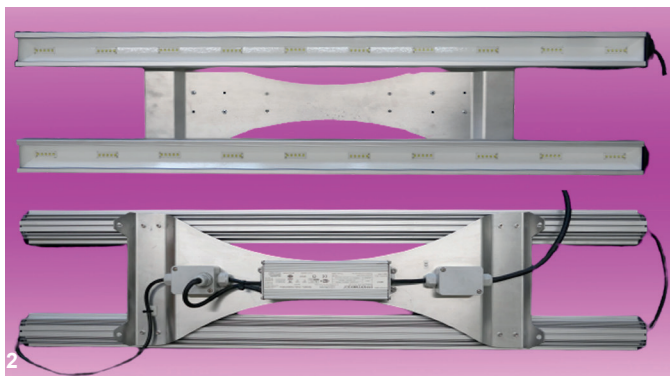


Plant Lighting

PlantLIGHT | Optimized for plants with or without flowers

Linear luminaire in aluminum housing for breeding of plants with or without flowering



TECHNICAL DESCRIPTION

Power 75 W (single) | 150 W (double)
Switching function on/off (standard)
Interface 1-10 V
LED control gear IP67 | ENEC
Permissible operating voltage 100-240VAC, 50Hz
Permissible ambient temperature -40°C to 50°C
Impact resistance IK08
Protection class luminaire IP65
Housing surface aluminum, anodized, colorless
Optical cover safety glass heat treated.
With mounting bracket for cable/chain suspension
Electrical equipment Incl. connecting cable
3G1mm², free conductor end: L = 1.0 m
Meets protection class 1 (SK I)

1. Main dimensions (single)

Length, Width, Height: 1025mm x 70mm x 120mm
Weight: approx. 3,9kg

2. Main dimensions (double)

Length, Width, Height: 1025mm x 265mm x 120mm
Weight: approx. 7,0kg

For the optional special equipment on request following nanometers (nm) areas are available:

720 - 750 nm FR
655 - 670 nm DR
620 - 645 nm R
566 - 569 nm LI
460 - 485 nm BL
520 - 540 nm GR
490 - 515 nm CY
440 - 460 nm RB

2700K / 3000K / 3500K / 4000K / 5000K / 5700K

All above mentioned LEDs can be combined on request.

Optional switching and control variants

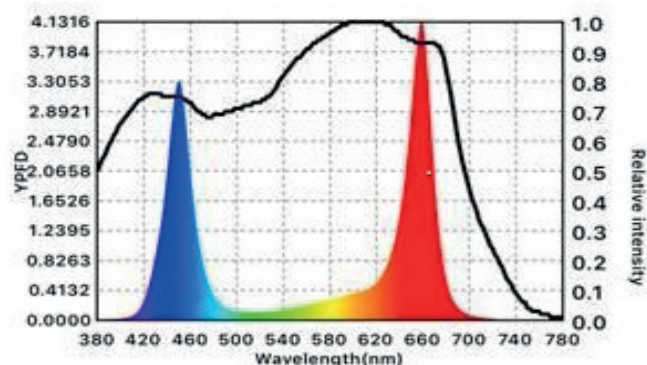
DALI, radio control, multi-channel control. Customer-specific control modules are available on request. At multiple suspensions, the luminaire can be optionally equipped with with a plug/coupling system.

Please specify when ordering.

Each luminaire is provided with a certificate of the light source (wavebands).

Weighted spectrum

Ref.: McCREEs ACTION SPECTRUM



Example of light spectrum

To comply with the data sheet specifications is the temperature at the Tc-point observed by <75°C. The module does not require any glass covering. Braun Lighting Solutions e. K. is a participant in the export initiative "Energie Effizienz – made in Germany", initiated by the Federal Ministry for the Economy and Technology. *Due to the complexity of the many possible combinations of drivers and LED modules, the values shown for technical LED parameters, including performance parameters, are typical. Actual values of specific products in specific configurations may vary from these typical values. The information and diagrams contained in this document do not constitute an offer or contractual obligation. Product parameters may change as a result of technical innovation and will be undertaken without prior notice. Our manufacturing conforms to DIN EN and VDE regulations.

BRAUN Lighting Solutions e.K.
Nunsdorfer Ring 2-10
12277 Berlin
Germany

www.braun.lighting
info@braun-lighting.com
+49 (0)30 700 77 63-100
+49 (0)30 700 77 63-101

