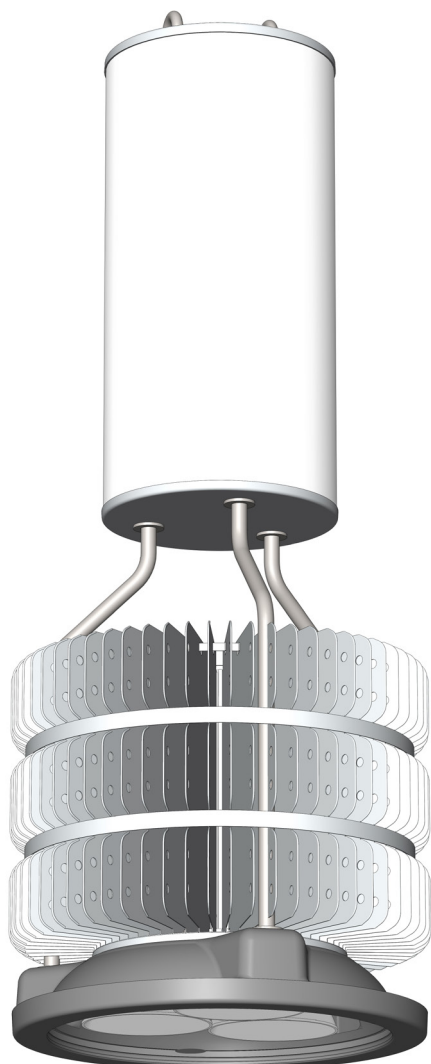


# MASS-LEDlight Saturn HighBay 3

ARENA • Large Areas • Industrial- and Building Lighting



- LED Industrial High Bay Light
- FuturePROOF > all components independently changeable
- Optimized for 1:1 replacement in commercial halls
- Replaces conventional High Bay lamps up to 400W
- Optimized for sustainable energy-efficient lighting
- Ready for connection and easy to install and maintain
- Easy installation guarantees fast changeover times
- Large light-emitting and extremely powerful light output
- Highest efficiency of all system components - longLIFE
- Different light distributions possible
- Vibration-resistant
- ThermoProtect System against overheating of the LED
- Lifetime L80: 60.000 - 100.000 h
- Optional: various control options
- Optional: external control by radio
- Warranty: 5 years

## Technical Description

Power consumption:	230 Watt
Luminous flux:	37000lm bei 5000K
Light color:	3000K   4000K   5000K
Light distributions symmetrical:	29°   42°   54°   88°
Switching function:	Eco (on/off)   Basic E1   Light E2   DALI
LED-control gear:	CE   ENEC   DALI   0-10   1-10V (Dim-to-Off)
Permissible operating voltage:	100-240VAC, 50/60Hz
Permissible ambient temperature:	-40°C up to 50°C
Housing:	aluminium
Optical cover:	safety glass
Degree of protection/Protection class:	IP54/SKI
Main dimensions (height, width, weight):	655mm, 260mm, ca. 8,4kg

BRAUN Lighting Solutions e. K. is a participant in the export initiative "Energie Effizienz – made in Germany", initiated by the Federal Ministry for the Economy and Technology. Due to the complexity of the many possible combinations of drivers and LED modules, the values shown for technical LED parameters, including performance parameters, are typical. Actual values of specific products in specific configurations may vary from these typical values. The information and diagrams contained in this document do not constitute an offer or contractual obligation. Product parameters may change as a result of technical innovation and will be undertaken without prior notice. Our manufacturing conforms to DIN EN and VDE regulations; the product conforms to European EMC regulations.

BRAUN LIGHTING SOLUTIONS e.K.  
Nunsdorfer Ring 2-10  
12277 Berlin  
Germany

[www.braun.lighting](http://www.braun.lighting)  
[info@braun-lighting.com](mailto:info@braun-lighting.com)  
☎ +49 (0)30 700 77 63-100  
☎ +49 (0)30 700 77 63-101

 **BRAUN**<sup>®</sup>  
LIGHTING SOLUTIONS