

Old-Berlin

Gas-Pole-top luminaire

The lamp Old Berlin is a faithful reconstruction of the original down to the smallest technical and artistic detail. This gas lamp achieves an excellent illumination, with a highly brilliant and natural color rendering. This golden-yellow illumination makes the surroundings appear lively and natural. High quality materials guarantee its longevity. The light is very easy to maintain due to a hinged roof and a side door.

Due to its rotationally symmetrical light distribution, this luminaire is ideally suited for the illumination of squares, streets, residential areas, green spaces and driveways.

Luminaire designs and materials:

Luminaire body and roof: Cast aluminium and aluminium.

Reflector: Thin sheet metal, enamelled white

Choose from the installation positions: Convex or concave

Other versions on request

Glazing options:

Glass: Safety glass, float glass, mouth-blown Flatglass restauro®

Guide frame configuration:

see versions V1, V2 a/b

Additional mounting options available on request.

Standard paint in Onyx Black (iron mica thick-layered paint)

Paint options according to RAL Color Table, as well as FerroGrip special surfacing.

Lantern-base configurations:

V1: Threaded top for mounting the lamp with the guide frame onto the masthead: Ø85mm or Ø100mm for 4x M12

V2 a: spigot Ø60mm

V2 b: spigot Ø76mm

Technical description:

Distribution chamber | flames: 4 or 6

Prepared for mantel: Base 1562

Gas consumption natural gas H at constant temperature operating pressure 24 mbar: 0,1 m³/h (4 fl.)

The gas is ignited by electronic ignition.

An intelligent switching electronics controls a micro solenoid valve and guarantees functional safety.

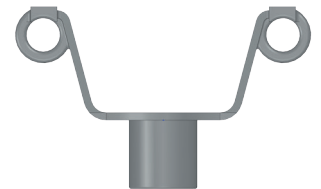
The BS-N 5.0 model is powered by a battery, the BS-GC Solar version is powered by solar technology.



Main dimensions:
Height ca. 995 mm
Width ca. 426 mm
Weight ca. 18 kg

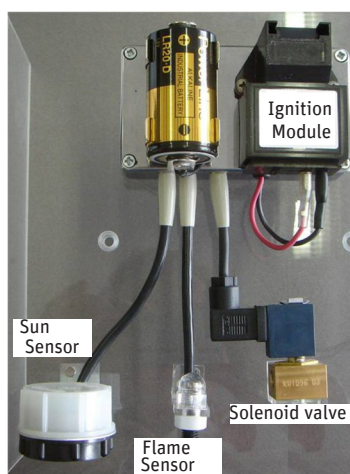


V1

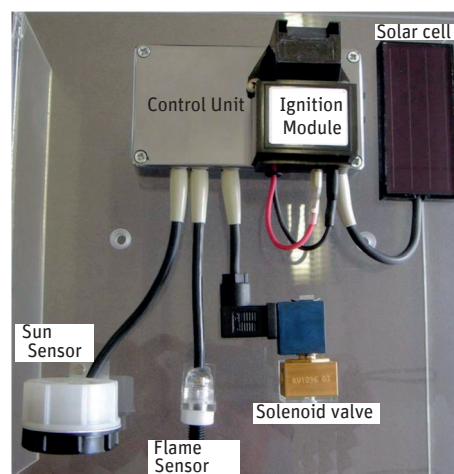


V2 a/b

BS-N 5.0



BS-GC Solar



BRAUN Lighting Solutions e. K. is a participant in the export initiative "Energie Effizienz – made in Germany", initiated by the Federal Ministry for the Economy and Technology. Due to the complexity of the many possible combinations of drivers and LED modules, the values shown for technical LED parameters, including performance parameters, are typical. Actual values of specific products in specific configurations may vary from these typical values. The information and diagrams contained in this document do not constitute an offer or contractual obligation. Product parameters may change as a result of technical innovation and will be undertaken without prior notice. Our manufacturing conforms to DIN EN and VDE regulations; the product conforms to European EMC regulations.