

# Old-Berlin

## LED pole-top luminaire

The Old-Berlin is a replication lantern that is true to the original in every technical and aesthetic detail. The lantern is equipped with innovative, energy-efficient LED technology from leading manufacturers. The Old-Berlin lantern achieves a magnificent lighting effect, with a brilliant and natural color rendering that perfectly replicates the light from a historic gaslamp. The golden-yellow illumination gives the environ a lively and natural appearance. The use of premium materials guarantees a long service-life. Thanks to its hinged roof and side-door, it is very easy to maintain (a version without door is also available). By means of its rotationally symmetrical light distribution, this lantern is especially well-suited for the illumination of public squares, streets, residential areas, green spaces and passageways.

### Lighting configurations and materials:

Lantern body and roof: Cast aluminum and aluminum

Reflector: Powder-coated white (RAL 9016)

(choose fitting type: convex or concave)

Replicate historic BAMAG BERLIN remote ignition housing with combustion pipe that serves as a central cableway (non visible cable).

Additional configurations available on request.

### Glazing options:

Plastic (PC) or acrylic (PMMA)

Glass: Safety glass, float glass, mouth-blown Flatglass „restauro“

### Guide frame configuration:

see versions V1, V2 a/b

Additional mounting options available on request.

Standard paint in Onyx Black (iron mica thick-layered paint)

Paint options according to RAL Color Table, as well as FerroGrip special surfacing.

### Lantern-base configurations:

V1: Threaded top for mounting the lamp with the guide frame onto the masthead: Ø85mm or Ø100mm for 4x M12

V2 a: spigot Ø60mm

V2 b: spigot Ø76mm

PlugBox: on/off

PlugBox ESS Basic: manual adjustability of basic brightness

PlugBox ESS Light: manual adjustability of basic brightness | manual adjustability of reduced brightness, switching from basic brightness to reduced brightness over 230VAC control input, (twilight switching / phase cut-off)  
Interface: 230VAC

MaxiDimm3000: manual adjustability of basic brightness | manual adjustability of reduced brightness, switching from basic brightness to reduced brightness over 230VAC control input (twilight switching / phase cut-off)  
variable dimming or segment switch off for symmetric or asymmetrical light distribution, Interface: 230VAC | 1-10V

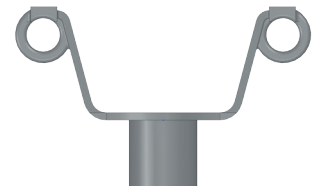


Main dimensions:  
Height 995 mm  
Width 426 mm  
Weight 18 kg  
Protection: IP 54

Electrical equipment: 230V/50Hz,  
protection class I or II



V1



V2 a/b

### His.lux® LED-Modul Serie 333



#### TECHNICAL DATA

System power ..... 6 - 36 Watt  
Expected life ..... >60.000 Std.  
Color temperature ..... 2700K\*  
Luminous flux ..... 2225 lm (36 Watt)  
Color rendering ..... CRI > 85  
IP protection class ..... IP 65  
Historical diffuser ..... PC satined  
Application area ..... -40°C bis +55°C  
Protection class ..... I oder II

\*Color temperature freely selectable

### NewNight® CONE LED-Modul



#### TECHNICAL DATA

System power ..... 8 - 25 watts  
Expected life ..... >60.000 H.  
Color temperature ..... 4100K\*  
Luminous flux ..... 2620 lm  
Color rendering ..... CRI > 85  
IP protection class ..... IP 65  
LED cover ..... PC transparent or satined  
Application area ..... -40°C bis +55°C  
Protection class ..... I oder II

\*Color temperature freely selectable

The Braun Lighting Solutions e.K. is a part of the export initiative „Energy Efficiency - Made in Germany „- initiated by the Federal Ministry of Economics and Technology.

The Braun Lighting Solutions e.K. is a partner in the European LED research project, supported by the FP7 cycled“ Eco-Innovation program.

LED Engine: L70 with present-value calculation report for the installed LEDs. Production according to DIN EN, VDE regulations, the product meets the EMC requirements. All features can be modified to your liking, all technical data and LED power values can be modified within the scope of technical progress without notice. Color renderings, illustrations and drawings are illustrative and may vary from the original.